



Village of Hampshire  
Village Board Meeting  
Thursday, April 16, 2026 - 7:00 PM  
Hampshire Village Hall  
234 South State Street, Hampshire, IL 60140

## AGENDA

1. Call to Order
2. Roll Call
3. Pledge of Allegiance
4. Public Comments
5. Motion to Approve Meeting Minutes from April 9, 2026
6. Motion to Approve the Accounts Payable for April 16, 2026
7. Proclamation Recognizing Abror Day
8. New Business
9. Old Business
10. Staff Reports
  - a. Building Report
  - b. Engineering Report
  - c. Financial Report
  - d. Police Report
  - e. Streets Report
11. Village Board Committee Reports
  - a. Business Development Commission
12. Announcements
13. Executive Session
14. Adjournment

Public Comments: The Board will allow each person who is properly registered to speak a maximum time of five (5) minutes, provided the Village President may reduce the maximum time to three (3) minutes before public comments begin if more than five (5) persons have registered to speak. Public comment is meant to allow for expression of opinion on, or for inquiry regarding, public affairs but is not meant for debate with the Board or its members. Good order and proper decorum shall always be maintained.

Recording: Please note that all meetings held by videoconference may be recorded, and all recordings will be made public. While State Law does not require consent, by requesting an invitation, joining the meeting by link or streaming, all participants acknowledge and consent to their image and voice being recorded and made available for public viewing.

Accommodations: The Village of Hampshire, in compliance with the Americans with Disabilities Act, requests that persons with disabilities, who require certain accommodations to allow them to observe and/or participate in the meeting(s) or have questions about the accessibility of the meeting(s) or facilities, contact the Village at 847-683-2181 to allow the Village to make reasonable accommodations for these persons.



---

\*\*\* OFFICIAL PROCLAMATION \*\*\*

---

**WHEREAS** in 1872, the Nebraska Board of Agriculture established a special day to be set aside for the planting of trees, *and*

**WHEREAS** this holiday, called Arbor Day, was first observed with the planting of more than a million trees in Nebraska, *and*

**WHEREAS** Arbor Day is now observed throughout the nation and the world, *and*

**WHEREAS** trees can be a solution to combating climate change by reducing the erosion of our precious topsoil by wind and water, cutting heating and cooling costs, moderating the temperature, cleaning the air, producing life-giving oxygen, and providing habitat for wildlife, *and*

**WHEREAS** trees are a renewable resource giving us paper, wood for our homes, fuel for our fires, and countless other wood products, *and*

**WHEREAS** trees in our village increase property values, enhance the economic vitality of business areas, and beautify our community, *and*

**WHEREAS** trees – wherever they are planted – are a source of joy and spiritual renewal.

**NOW, THEREFORE,** I, Michael J. Reid, Jr., Village President of the Village of Hampshire, do hereby proclaim Friday, April 24, 2026 as ARBOR DAY in the Village of Hampshire, and I urge all citizens to celebrate Arbor Day and to support efforts to protect our trees and woodlands, *and*

**FURTHER,** I urge all citizens to plant trees to gladden the heart and promote the well-being of this and future generations.

**DATED THIS** \_\_\_\_\_ day of \_\_\_\_\_, 20\_\_\_\_

Village President: \_\_\_\_\_





Village of Hampshire  
234 S. State Street, Hampshire IL 60140  
Phone: 847-683-2181      www.hampshireil.org

## Monthly Report

---

**TO: President Reid; Board of Trustees**  
**FROM: Mo Khan, Assistant Village Manager for Development**  
**FOR: Village Board Meeting on April 16, 2026**  
**RE: Building Report - March 2026**

---

<b>Building Performance Metrics</b>	<u>March</u>	<u>Monthly Avg.</u>	<u>CY26 TTD</u>
• Total permits issued	67	49	147
○ New single-family homes	25	22.67	68
○ Townhome/duplex units	0	0	0
• Avg. plan review time	4.99	5.61	n/a
• Inspections	657	545	1,634
• Permit fees collected	\$69,995	\$50,571	\$151,712
• Other Village fees collected	\$75,289	\$53,816	\$161,449
<b>Code Enforcement Performance Metrics</b>	<u>March</u>	<u>Monthly Avg.</u>	<u>CY26 TTD</u>
• No. of complaints	0	0.33	1
• No. of new cases	0	0.33	1
• No. of active cases	1	n/a	n/a





## ENGINEERING ENTERPRISES, INC.

---

52 Wheeler Road, Sugar Grove, IL 60554  
Ph: 630.466.6700 • Fx: 630.466.6701  
www.eeiweb.com

To: Village President and Board of Trustees

From: Timothy N. Paulson, P.E., CFM

Date: April 9, 2026

**Re: *Monthly Engineering Report***

EEI Job #: HA2600-V

---

All:

Please find below a brief status report of current Village and development projects.

### **Village Projects**

- Safe Routes to School
  - ✓ Construction Underway
  - ✓ Construction Expected to Continue Through May
  
- Park and Rinn Storm Sewer Improvements
  - ✓ Waiting on Final Grant Documentation
  - ✓ Then Move into Design
  
- N. State Street
  - ✓ IDOT Closeout
  
- Lead Service Line Removal
  - ✓ Alternatives and Estimates Completed
  
- Well No. 13 Rehabilitation
  - ✓ Construction Ongoing
  - ✓ Pump and Motor Replacement
  
- Well 10 and 13 WTP Media Replacement
  - ✓ Construction Getting Started
  
- RRA/ERP Update
  - ✓ Documents Provided to Public Works

## **Development Projects**

- Prairie Ridge K & L, M, and R
  - ✓ Home Construction Ongoing in K & L and M
    - Anticipate Acceptance Request this Year
  - ✓ Neighborhood R One Year Maintenance Inspection Punch List Issued
  
- Prairie Ridge – North of Kelley Road
  - ✓ Home Construction Ongoing
  - ✓ Neighborhoods T, Z, AA, and J1
    - Punchlist Inspections Underway
  - ✓ Neighborhoods U, V & J2
    - Construction Anticipated for U and V this year
  - ✓ Neighborhoods G, H, & I
    - Neighborhoods G and I1 Binder Paving Completed – Construction Resumes this Spring
  - ✓ Neighborhoods W and X Engineering and Plats Approved
    - Construction Anticipated this Year
  
- Tamms Farm
  - ✓ Waiting for Developer to Address Punch List Items for Acceptance
  
- ~~Stanley North~~—TRZ Self Storage American General Storage Development
  - ✓ Easement Documents – Waiting for Resubmittal
  
- Hampshire 90 Logistics Park
  - ✓ No Activity
  
- Hampshire Grove (Old Dominion)
  - ✓ Ryan Drive Maintenance Punch List Items to be Completed this Spring
  
- Tinajero Property
  - ✓ Nearing Completion
  
- Oakstead
  - ✓ Engineering and Plats Approved for Neighborhoods A thru G
  - ✓ Neighborhood A binder Paving Completed
  - ✓ PRV Station Design – Complete
  - ✓ Off-Site Water Main – IEPA Permit Received Construction Starting
  - ✓
  
- Hidden Creek
  - ✓ Investigating Sewer and Water Requirements for Latest Concept Submittal

If you have any questions, please contact me at [tpaulson@eeiweb.com](mailto:tpaulson@eeiweb.com) or (630) 466-6727.

Pc: Mary Jo Seehausen, Village Manager

Village of Hampshire  
 Budget Versus Actual Report Overview  
 Ten Months Ended February 28, 2026

<b>General Fund</b>						% of Budget
<b>10 MONTHS ENDED</b>				<b>2025-2026</b>		
<b>YTD BUDGET</b>	<b>YTD ACTUAL</b>	<b>DELTA \$</b>	<b>DELTA %</b>	<b>TOT BUDGET</b>		
Revenue	9,113,264	8,418,820	(694,444)	-8%	10,631,197	79%
Expenditures/Expense	8,836,239	6,273,834	(2,562,405)	-29%	10,603,486	59%
YTD Surplus/(Deficit)	277,025	2,144,986	1,867,961		27,711	
<b>Special Revenue Funds</b>						
Revenue	889,898	1,047,412	157,514	18%	966,361	108%
Expenditures/Expense	585,341	493,856	(91,485)	-16%	702,409	70%
YTD Surplus/(Deficit)	304,557	553,556	248,999		263,952	
<b>Capital Project Funds</b>						
Revenue	17,287,201	18,591,834	1,304,633	8%	20,744,640	90%
Expenditures/Expense	15,899,884	14,622,226	(1,277,658)	-8%	19,079,862	77%
YTD Surplus/(Deficit)	1,387,317	3,969,608	2,582,291		1,664,778	
<b>Enterprise Funds</b>						
Revenue	4,862,701	4,760,376	(102,325)	-2%	5,835,241	82%
Expenditures/Expense	4,555,114	2,527,827	(2,027,287)	-45%	5,466,136	46%
YTD Surplus/(Deficit)	307,587	2,232,549	1,924,962		369,105	
<b>Total Village</b>						
Revenue	32,153,064	32,818,442	665,378	2%	38,177,439	86%
Expenditures/Expense	29,876,578	23,917,743	(5,958,835)	-20%	35,851,893	67%
YTD Surplus/(Deficit)	2,276,486	8,900,699	6,624,213		2,325,546	



<b>Agency Funds</b>						% of Budget
<b>10 MONTHS ENDED</b>				<b>2025-2026</b>		
<b>YTD BUDGET</b>	<b>YTD ACTUAL</b>	<b>DELTA \$</b>	<b>DELTA %</b>	<b>TOT BUDGET</b>		
Revenue	1,252,153	1,288,673	36,520	3%	1,262,986	102%
Expenditures/Expense	1,047,667	240,240	(807,427)	-77%	1,257,200	19%
YTD Surplus/(Deficit)	204,486	1,048,433	843,947		5,786	

<b>Pension Trust Fund</b>						% of Budget
<b>10 MONTHS ENDED</b>				<b>2025-2026</b>		
<b>YTD BUDGET</b>	<b>YTD ACTUAL</b>	<b>DELTA \$</b>	<b>DELTA %</b>	<b>TOT BUDGET</b>		
Revenue	1,010,563	1,361,612	351,049	35%	1,212,675	112%
Expenditures/Expense	462,197	186,143	(276,054)	-60%	554,636	34%
YTD Surplus/(Deficit)	548,366	1,175,469	627,103		658,039	

Village of Hampshire  
 Budget Versus Actual Report - General Fund Summary  
 Ten Months Ended February 28, 2026

	General Fund Revenues (01)				
	10 MONTHS ENDED				2025-2026
	YTD BUDGET	YTD ACTUAL	DELTA \$	DELTA %	TOT BUDGET
<b>GENERAL FUND REVENUE</b>					
Property Tax	1,523,600	1,550,026	26,426	2%	1,523,600
Intergovernmental	3,875,060	4,134,914	259,854	7%	4,650,072
Service Fees	91,500	91,833	333	0%	109,800
Investment Income	105,642	143,303	37,661	36%	126,770
Reimbursable	218,795	148,804	(69,991)	-32%	262,554
Licenses, Fines, Permits, Fees	635,364	941,710	306,346	48%	762,436
Grant Income	950,277	10,000	(940,277)	-99%	1,140,332
Other Income	305,750	283,266	(22,484)	-7%	366,900
Debt Issuance	486,808	-	(486,808)	-100%	584,170
Transfers In	208,333	-	(208,333)	-100%	250,000
<b>TOTAL GENERAL FUND REVENUE</b>	<b>8,401,129</b>	<b>7,303,856</b>	<b>(1,097,273)</b>	<b>-13%</b>	<b>9,776,634</b>

	General Fund Expenses (01)				
	10 MONTHS ENDED				2025-2026
	YTD BUDGET	YTD ACTUAL	DELTA \$	DELTA %	TOT BUDGET
<b>GENERAL FUND EXPENSE</b>					
<b>ADMINISTRATION</b>					
Personal Services	689,933	674,843	(15,090)	-2%	827,920
Contractual Services	655,842	693,670	37,828	6%	787,010
Commodities	30,188	19,737	(10,451)	-35%	36,225
Other Expenses	82,991	3,659	(79,332)	-96%	99,589
Capital Outlay	32,729	43,335	10,606	32%	39,275
Transfers	-	-	-	0%	-
<b>TOTAL ADMINISTRATION</b>	<b>1,491,683</b>	<b>1,435,244</b>	<b>(56,439)</b>	<b>-4%</b>	<b>1,790,019</b>

<b>POLICE</b>					
Personal Services	2,431,534	1,804,744	(626,790)	-26%	2,917,841
Contractual Services	438,024	432,144	(5,880)	-1%	525,629
Commodities	148,150	58,199	(89,951)	-61%	177,780
Capital Outlay	240,508	196,719	(43,789)	-18%	288,609
<b>TOTAL POLICE</b>	<b>3,258,216</b>	<b>2,491,806</b>	<b>(766,410)</b>	<b>-24%</b>	<b>3,909,859</b>

<b>STREET DEPARTMENT</b>					
Personal Services	647,633	598,324	(49,309)	-8%	777,159
Contractual Services	388,984	403,498	14,514	4%	466,780
Commodities	73,554	72,418	(1,136)	-2%	88,265
Other Expenses	99,068	30,996	(68,072)	-69%	118,882
Capital Outlay	1,254,463	338,127	(916,336)	-73%	1,505,356
Transfers	885,667	-	(885,667)	-100%	1,062,800
<b>TOTAL STREET DEPARTMENT</b>	<b>3,349,369</b>	<b>1,443,363</b>	<b>(1,906,006)</b>	<b>-57%</b>	<b>4,019,242</b>

<b>PLANNING AND ZONING DEPARTMENT</b>					
Personal Services	2,153	786	(1,367)	-63%	2,584
Contractual Services	917	324	(593)	-65%	1,100
<b>TOTAL PLANNING AND ZONING DEPT.</b>	<b>3,070</b>	<b>1,110</b>	<b>(1,960)</b>	<b>-64%</b>	<b>3,684</b>

<b>POLICE COMMISSION</b>					
Personal Services	808	969	161	20%	969
Contractual Services	2,250	400	(1,850)	-82%	2,700
Other Expenses	-	-	-	0%	-
Commodities	41	-	(41)	-100%	50
<b>TOTAL POLICE COMMISSION</b>	<b>3,099</b>	<b>1,369</b>	<b>(1,730)</b>	<b>-56%</b>	<b>3,719</b>

<b>PROMOTIONS COMMITTEE</b>					
Contractual Services	13,584	11,759	(1,825)	-13%	16,300
Commodities	5,083	1,503	(3,580)	-70%	6,100
<b>TOTAL PROMOTIONS COMMITTEE</b>	<b>18,667</b>	<b>13,262</b>	<b>(5,405)</b>	<b>-29%</b>	<b>22,400</b>

<b>SUB TOTAL GENERAL FUND EXPENSE</b>	<b>8,124,104</b>	<b>5,386,154</b>	<b>(2,737,950)</b>	<b>-34%</b>	<b>9,748,923</b>
---------------------------------------	------------------	------------------	--------------------	-------------	------------------

<b>SUB TOTAL YEAR-TO-DATE SURPLUS/(DEFICIT)</b>	<b>277,025</b>	<b>1,917,702</b>	<b>1,640,677</b>	<b>592%</b>	<b>27,711</b>
---	----------------	------------------	------------------	-------------	---------------

<b>GENERAL FUND SUBFUNDS</b>	<b>-</b>	<b>227,284</b>	<b>227,284</b>	<b>100%</b>	<b>-</b>
------------------------------	----------	----------------	----------------	-------------	----------

<b>TOTAL YEAR-TO-DATE SURPLUS/(DEFICIT)</b>	<b>277,025</b>	<b>2,144,986</b>	<b>1,867,961</b>	<b>674%</b>	<b>27,711</b>
---	----------------	------------------	------------------	-------------	---------------

Village of Hampshire  
 Budget Versus Actual Report - General Fund Subfunds  
 Ten Months Ended February 28, 2026

	School Impact Fees (60)					Library Impact Fees (61)				
	10 MONTHS ENDED		DELTA \$	DELTA %	2025-2026 TOT BUDGET	10 MONTHS ENDED		DELTA \$	DELTA %	2025-2026 TOT BUDGET
	YTD BUDGET	YTD ACTUAL				YTD BUDGET	YTD ACTUAL			
<b>REVENUE</b>										
Investment Income	208	198	(10)	-5%	250	500	592	92	18%	600
Licenses, Fines, Permits, Fees	478,426	749,890	271,464	57%	574,111	36,663	52,224	15,561	42%	43,996
<b>TOTAL REVENUE</b>	<b>478,634</b>	<b>750,088</b>	<b>271,454</b>	<b>57%</b>	<b>574,361</b>	<b>37,163</b>	<b>52,816</b>	<b>15,653</b>	<b>42%</b>	<b>44,596</b>
<b>EXPENSE</b>										
Other Expenses	478,634	653,543	174,909	37%	574,361	37,163	20,233	(16,930)	-46%	44,596
<b>TOTAL EXPENSE</b>	<b>478,634</b>	<b>653,543</b>	<b>174,909</b>	<b>37%</b>	<b>574,361</b>	<b>37,163</b>	<b>20,233</b>	<b>(16,930)</b>	<b>-46%</b>	<b>44,596</b>
<b>YEAR-TO-DATE SURPLUS/(DEFICIT)</b>	<b>-</b>	<b>96,545</b>	<b>96,545</b>	<b>100%</b>	<b>-</b>	<b>-</b>	<b>32,583</b>	<b>32,583</b>	<b>100%</b>	<b>-</b>

	Parks Impact Fees (62)					Fire Impact Fees (63)				
	10 MONTHS ENDED		DELTA \$	DELTA %	2025-2026 TOT BUDGET	10 MONTHS ENDED		DELTA \$	DELTA %	2025-2026 TOT BUDGET
	YTD BUDGET	YTD ACTUAL				YTD BUDGET	YTD ACTUAL			
<b>REVENUE</b>										
Investment Income	21	34	13	62%	25	83	128	45	54%	100
Licenses, Fines, Permits, Fees	42,767	71,779	29,012	68%	51,321	132,069	206,730	74,661	57%	158,482
<b>TOTAL REVENUE</b>	<b>42,788</b>	<b>71,813</b>	<b>29,025</b>	<b>68%</b>	<b>51,346</b>	<b>132,152</b>	<b>206,858</b>	<b>74,706</b>	<b>57%</b>	<b>158,582</b>
<b>EXPENSE</b>										
Other Expenses	42,788	59,510	16,722	39%	51,346	132,152	133,712	1,560	1%	158,582
<b>TOTAL EXPENSE</b>	<b>42,788</b>	<b>59,510</b>	<b>16,722</b>	<b>39%</b>	<b>51,346</b>	<b>132,152</b>	<b>133,712</b>	<b>1,560</b>	<b>1%</b>	<b>158,582</b>
<b>YEAR-TO-DATE SURPLUS/(DEFICIT)</b>	<b>-</b>	<b>12,303</b>	<b>12,303</b>	<b>100%</b>	<b>-</b>	<b>-</b>	<b>73,146</b>	<b>73,146</b>	<b>100%</b>	<b>-</b>

	Cemetery Impact Fees (66)					Township Impact Fees (67)				
	10 MONTHS ENDED		DELTA \$	DELTA %	2025-2026 TOT BUDGET	10 MONTHS ENDED		DELTA \$	DELTA %	2025-2026 TOT BUDGET
	YTD BUDGET	YTD ACTUAL				YTD BUDGET	YTD ACTUAL			
<b>REVENUE</b>										
Investment Income	29	18	(11)	-38%	35	3	4	1	33%	3
Licenses, Fines, Permits, Fees	6,250	9,730	3,480	56%	7,500	15,116	23,637	8,521	56%	18,140
<b>TOTAL REVENUE</b>	<b>6,279</b>	<b>9,748</b>	<b>3,469</b>	<b>55%</b>	<b>7,535</b>	<b>15,119</b>	<b>23,641</b>	<b>8,522</b>	<b>56%</b>	<b>18,143</b>
<b>EXPENSE</b>										
Other Expenses	6,279	-	(6,279)	-100%	7,535	15,119	20,682	5,563	37%	18,143
<b>TOTAL EXPENSE</b>	<b>6,279</b>	<b>-</b>	<b>(6,279)</b>	<b>-100%</b>	<b>7,535</b>	<b>15,119</b>	<b>20,682</b>	<b>5,563</b>	<b>37%</b>	<b>18,143</b>
<b>YEAR-TO-DATE SURPLUS/(DEFICIT)</b>	<b>-</b>	<b>9,748</b>	<b>9,748</b>	<b>100%</b>	<b>-</b>	<b>-</b>	<b>2,959</b>	<b>2,959</b>	<b>100%</b>	<b>-</b>

	Total General Fund Subfunds				
	10 MONTHS ENDED		DELTA \$	DELTA %	2025-2026 TOT BUDGET
	YTD BUDGET	YTD ACTUAL			
<b>REVENUE</b>					
Investment Income	844	974	130	15%	1,013
Licenses, Fines, Permits, Fees	711,291	1,113,990	402,699	57%	853,550
<b>TOTAL REVENUE</b>	<b>712,135</b>	<b>1,114,964</b>	<b>402,829</b>	<b>57%</b>	<b>854,563</b>
<b>EXPENSE</b>					
Other Expenses	712,135	887,680	175,545	25%	854,563
<b>TOTAL EXPENSE</b>	<b>712,135</b>	<b>887,680</b>	<b>175,545</b>	<b>25%</b>	<b>854,563</b>
<b>YEAR-TO-DATE SURPLUS/(DEFICIT)</b>	<b>-</b>	<b>227,284</b>	<b>227,284</b>	<b>100%</b>	<b>-</b>

Village of Hampshire  
 Budget Versus Actual Report - Special Revenue Fund Summary  
 Ten Months Ended February 28, 2026

	Tax Increment Financing (05)					Hotel/Motel Tax (07)				
	10 MONTHS ENDED		2025-2026			10 MONTHS ENDED		2025-2026		
	YTD BUDGET	YTD ACTUAL	DELTA \$	DELTA %	TOT BUDGET	YTD BUDGET	YTD ACTUAL	DELTA \$	DELTA %	TOT BUDGET
<b>REVENUE</b>										
Property Tax	320,753	326,971	6,218	2%	320,753	-	-	-	0%	-
Intergovernmental	-	-	-	0%	-	-	-	-	0%	-
Investment Income	1,000	1,583	583	58%	1,200	4	111	107	2675%	5
Licenses, Fines, Permits, Fees	-	-	-	0%	-	18,000	31,487	13,487	75%	21,600
Other Income	-	-	-	0%	-	-	-	-	0%	-
Transfers	-	-	-	0%	-	-	-	-	0%	-
<b>TOTAL REVENUE</b>	<b>321,753</b>	<b>328,554</b>	<b>6,801</b>	<b>2%</b>	<b>321,953</b>	<b>18,004</b>	<b>31,598</b>	<b>13,594</b>	<b>76%</b>	<b>21,605</b>
<b>EXPENSE</b>										
Contractual Services	2,083	1,178	(905)	-43%	2,500	15,833	19,000	3,167	20%	19,000
Commodities	-	-	-	0%	-	-	-	-	0%	-
Other Expenses	158,670	190,404	31,734	20%	190,404	5,000	6,000	1,000	20%	6,000
Transfers	83,334	-	(83,334)	-100%	100,000	-	-	-	0%	-
<b>TOTAL EXPENSE</b>	<b>244,087</b>	<b>191,582</b>	<b>(52,505)</b>	<b>-22%</b>	<b>292,904</b>	<b>20,833</b>	<b>25,000</b>	<b>4,167</b>	<b>20%</b>	<b>25,000</b>
<b>YEAR-TO-DATE SURPLUS/(DEFICIT)</b>	<b>77,666</b>	<b>136,972</b>	<b>59,306</b>	<b>76%</b>	<b>29,049</b>	<b>(2,829)</b>	<b>6,598</b>	<b>9,427</b>	<b>-333%</b>	<b>(3,395)</b>

	Road and Bridge (10)					Motor Fuel Tax (15)				
	10 MONTHS ENDED		2025-2026			10 MONTHS ENDED		2025-2026		
	YTD BUDGET	YTD ACTUAL	DELTA \$	DELTA %	TOT BUDGET	YTD BUDGET	YTD ACTUAL	DELTA \$	DELTA %	TOT BUDGET
<b>REVENUE</b>										
Property Tax	132,663	132,735	72	0%	132,663	-	-	-	0%	-
Intergovernmental	1,450	2,321	871	60%	1,740	319,700	296,676	(23,024)	-7%	383,640
Investment Income	80	213	133	166%	96	41,667	68,363	26,696	64%	50,000
Licenses, Fines, Permits, Fees	-	-	-	0%	-	-	-	-	0%	-
Grant Income	-	-	-	0%	-	-	130,922	130,922	100%	-
<b>TOTAL REVENUE</b>	<b>134,193</b>	<b>135,269</b>	<b>1,076</b>	<b>1%</b>	<b>134,499</b>	<b>361,367</b>	<b>495,961</b>	<b>134,594</b>	<b>37%</b>	<b>433,640</b>
<b>EXPENSE</b>										
Contractual Services	108,333	130,000	21,667	20%	130,000	-	-	-	0%	-
Commodities	-	-	-	0%	-	166,667	127,597	(39,070)	-23%	200,000
Other Expenses	-	-	-	0%	-	-	-	-	0%	-
<b>TOTAL EXPENSE</b>	<b>108,333</b>	<b>130,000</b>	<b>21,667</b>	<b>20%</b>	<b>130,000</b>	<b>166,667</b>	<b>127,597</b>	<b>(39,070)</b>	<b>-23%</b>	<b>200,000</b>
<b>YEAR-TO-DATE SURPLUS/(DEFICIT)</b>	<b>25,860</b>	<b>5,269</b>	<b>(20,591)</b>	<b>-80%</b>	<b>4,499</b>	<b>194,700</b>	<b>368,364</b>	<b>173,664</b>	<b>89%</b>	<b>233,640</b>

	SSA #2-26 (52)					Total Special Revenue Funds				
	10 MONTHS ENDED		2025-2026			10 MONTHS ENDED		2025-2026		
	YTD BUDGET	YTD ACTUAL	DELTA \$	DELTA %	TOT BUDGET	YTD BUDGET	YTD ACTUAL	DELTA \$	DELTA %	TOT BUDGET
<b>REVENUE</b>										
Property Tax	54,164	55,020	856	2%	54,164	507,580	514,726	7,146	1%	507,580
Intergovernmental	-	-	-	0%	-	321,150	298,997	(22,153)	-7%	385,380
Investment Income	417	1,010	593	142%	500	43,168	71,280	28,112	65%	51,801
Licenses, Fines, Permits, Fees	-	-	-	0%	-	18,000	31,487	13,487	75%	21,600
Grant Income	-	-	-	0%	-	-	130,922	130,922	100%	-
Other Income	-	-	-	0%	-	-	-	-	0%	-
Transfers	-	-	-	0%	-	-	-	-	0%	-
<b>TOTAL REVENUE</b>	<b>54,581</b>	<b>56,030</b>	<b>1,449</b>	<b>3%</b>	<b>54,664</b>	<b>889,898</b>	<b>1,047,412</b>	<b>157,514</b>	<b>18%</b>	<b>966,361</b>
<b>EXPENSE</b>										
Personal Services	19,426	14,667	(4,759)	-24%	23,311	19,426	14,667	(4,759)	-24%	23,311
Contractual Services	-	-	-	0%	-	126,249	150,178	23,929	19%	151,500
Commodities	-	-	-	0%	-	166,667	127,597	(39,070)	-23%	200,000
Other Expenses	25,995	5,010	(20,985)	-81%	31,194	189,665	201,414	11,749	6%	227,598
Transfers	-	-	-	0%	-	83,334	-	(83,334)	-100%	100,000
<b>TOTAL EXPENSE</b>	<b>45,421</b>	<b>19,677</b>	<b>(25,744)</b>	<b>-57%</b>	<b>54,505</b>	<b>585,341</b>	<b>493,856</b>	<b>(91,485)</b>	<b>-16%</b>	<b>702,409</b>
<b>YEAR-TO-DATE SURPLUS/(DEFICIT)</b>	<b>9,160</b>	<b>36,353</b>	<b>27,193</b>	<b>297%</b>	<b>159</b>	<b>304,557</b>	<b>553,556</b>	<b>248,999</b>	<b>82%</b>	<b>263,952</b>



Village of Hampshire  
 Budget Versus Actual Report - Enterprise Fund Summary  
 Ten Months Ended February 28, 2026

	ARRA Loan Debt Serv Fund (28)					Garbage (29)				
	10 MONTHS ENDED			2025-2026		10 MONTHS ENDED			2025-2026	
	YTD BUDGET	YTD ACTUAL	DELTA \$	DELTA %	TOT BUDGET	YTD BUDGET	YTD ACTUAL	DELTA \$	DELTA %	TOT BUDGET
<b>REVENUE</b>										
Service Fees	844,750	897,450	52,700	6%	1,013,700	735,948	718,857	(17,091)	-2%	883,137
Investment Income	-	-	-	0%	-	-	-	-	0%	-
Licenses, Fines, Permits, Fees	6,336	12,636	6,300	99%	7,603	6,991	10,896	3,905	56%	8,390
Other Income	-	-	-	0%	-	-	-	-	0%	-
<b>TOTAL REVENUE</b>	<b>851,086</b>	<b>910,086</b>	<b>59,000</b>	<b>7%</b>	<b>1,021,303</b>	<b>742,939</b>	<b>729,753</b>	<b>(13,186)</b>	<b>-2%</b>	<b>891,527</b>
<b>EXPENSE</b>										
Personal Services	-	-	-	0%	-	-	-	-	0%	-
Contractual Services	-	-	-	0%	-	712,564	705,889	(6,675)	-1%	855,076
Commodities	-	-	-	0%	-	-	-	-	0%	-
Other Expenses	-	-	-	0%	-	-	-	-	0%	-
Capital Outlay	-	-	-	0%	-	-	-	-	0%	-
Transfers	566,667	-	(566,667)	-100%	680,000	9,833	9,833	-	0%	11,800
<b>TOTAL EXPENSE</b>	<b>566,667</b>	<b>-</b>	<b>(566,667)</b>	<b>-100%</b>	<b>680,000</b>	<b>722,397</b>	<b>715,722</b>	<b>(6,675)</b>	<b>-1%</b>	<b>866,876</b>
<b>YEAR-TO-DATE SURPLUS/(DEFICIT)</b>	<b>284,419</b>	<b>910,086</b>	<b>625,667</b>	<b>220%</b>	<b>341,303</b>	<b>20,542</b>	<b>14,031</b>	<b>(6,511)</b>	<b>-32%</b>	<b>24,651</b>

	Water (30)					Sewer (31)				
	10 MONTHS ENDED			2025-2026		10 MONTHS ENDED			2025-2026	
	YTD BUDGET	YTD ACTUAL	DELTA \$	DELTA %	TOT BUDGET	YTD BUDGET	YTD ACTUAL	DELTA \$	DELTA %	TOT BUDGET
<b>REVENUE</b>										
Service Fees	1,246,655	1,360,921	114,266	9%	1,495,986	1,339,706	1,592,198	252,492	19%	1,607,647
Investment Income	-	-	-	0%	-	-	-	-	0%	-
Licenses, Fines, Permits, Fees	99,700	126,342	26,642	27%	119,640	14,948	22,590	7,642	51%	17,938
Other Income	-	3,196	3,196	100%	-	-	3,196	3,196	100%	-
Transfers	500,000	-	(500,000)	-100%	600,000	66,667	-	(66,667)	-100%	80,000
<b>TOTAL REVENUE</b>	<b>1,846,355</b>	<b>1,490,459</b>	<b>(355,896)</b>	<b>-19%</b>	<b>2,215,626</b>	<b>1,421,321</b>	<b>1,617,984</b>	<b>196,663</b>	<b>14%</b>	<b>1,705,585</b>
<b>EXPENSE</b>										
Personal Services	285,258	231,851	(53,407)	-19%	342,310	285,258	231,536	(53,722)	-19%	342,310
Contractual Services	974,229	515,761	(458,468)	-47%	1,169,075	766,478	420,657	(345,821)	-45%	919,774
Commodities	140,734	121,849	(18,885)	-13%	168,881	90,542	101,220	10,678	12%	108,650
Other Expenses	87,500	-	(87,500)	-100%	105,000	157,917	20,000	(137,917)	-87%	189,500
Capital Outlay	317,417	89,231	(228,186)	-72%	380,900	80,717	-	(80,717)	-100%	96,860
Transfers	40,000	40,000	-	0%	48,000	40,000	40,000	-	0%	48,000
<b>TOTAL EXPENSE</b>	<b>1,845,138</b>	<b>998,692</b>	<b>(846,446)</b>	<b>-46%</b>	<b>2,214,166</b>	<b>1,420,912</b>	<b>813,413</b>	<b>(607,499)</b>	<b>-43%</b>	<b>1,705,094</b>
<b>YEAR-TO-DATE SURPLUS/(DEFICIT)</b>	<b>1,217</b>	<b>491,767</b>	<b>490,550</b>	<b>40308%</b>	<b>1,460</b>	<b>409</b>	<b>804,571</b>	<b>804,162</b>	<b>196617%</b>	<b>491</b>

	Water Construction (34)					Sewer Construction (40)				
	10 MONTHS ENDED			2025-2026		10 MONTHS ENDED			2025-2026	
	YTD BUDGET	YTD ACTUAL	DELTA \$	DELTA %	TOT BUDGET	YTD BUDGET	YTD ACTUAL	DELTA \$	DELTA %	TOT BUDGET
<b>REVENUE</b>										
Service Fees	-	-	-	0%	-	-	-	-	0%	-
Investment Income	1,000	629	(371)	-37%	1,200	-	-	-	0%	-
Licenses, Fines, Permits, Fees	-	5,200	5,200	100%	-	-	6,265	6,265	100%	-
Other Income	-	-	-	0%	-	-	-	-	0%	-
Transfers	-	-	-	0%	-	-	-	-	0%	-
<b>TOTAL REVENUE</b>	<b>1,000</b>	<b>5,829</b>	<b>4,829</b>	<b>483%</b>	<b>1,200</b>	<b>-</b>	<b>6,265</b>	<b>6,265</b>	<b>100%</b>	<b>-</b>
<b>EXPENSE</b>										
Personal Services	-	-	-	0%	-	-	-	-	0%	-
Contractual Services	-	-	-	0%	-	-	-	-	0%	-
Commodities	-	-	-	0%	-	-	-	-	0%	-
Other Expenses	-	-	-	0%	-	-	-	-	0%	-
Capital Outlay	-	-	-	0%	-	-	-	-	0%	-
Transfers	-	-	-	0%	-	-	-	-	0%	-
<b>TOTAL EXPENSE</b>	<b>-</b>	<b>-</b>	<b>-</b>	<b>0%</b>	<b>-</b>	<b>-</b>	<b>-</b>	<b>-</b>	<b>0%</b>	<b>-</b>
<b>YEAR-TO-DATE SURPLUS/(DEFICIT)</b>	<b>1,000</b>	<b>5,829</b>	<b>4,829</b>	<b>483%</b>	<b>1,200</b>	<b>-</b>	<b>6,265</b>	<b>6,265</b>	<b>100%</b>	<b>-</b>

	Total Enterprise Funds				
	10 MONTHS ENDED			2025-2026	
	YTD BUDGET	YTD ACTUAL	DELTA \$	DELTA %	TOT BUDGET
<b>REVENUE</b>					
Service Fees	4,167,059	4,569,426	402,367	10%	5,000,470
Investment Income	1,000	629	(371)	-37%	1,200
Licenses, Fines, Permits, Fees	127,975	183,929	55,954	44%	153,571
Other Income	-	6,392	6,392	100%	-
Transfers	566,667	-	(566,667)	-100%	680,000
<b>TOTAL REVENUE</b>	<b>4,862,701</b>	<b>4,760,376</b>	<b>(102,325)</b>	<b>-2%</b>	<b>5,835,241</b>
<b>EXPENSE</b>					
Personal Services	570,516	463,387	(107,129)	-19%	684,620
Contractual Services	2,453,271	1,642,307	(810,964)	-33%	2,943,925
Commodities	231,276	223,069	(8,207)	-4%	277,531
Other Expenses	245,417	20,000	(225,417)	-92%	294,500
Capital Outlay	398,134	89,231	(308,903)	-78%	477,760
Transfers	656,500	89,833	(566,667)	-86%	787,800
<b>TOTAL EXPENSE</b>	<b>4,555,114</b>	<b>2,527,827</b>	<b>(2,027,287)</b>	<b>-45%</b>	<b>5,466,136</b>
<b>YEAR-TO-DATE SURPLUS/(DEFICIT)</b>	<b>307,587</b>	<b>2,232,549</b>	<b>1,924,962</b>	<b>626%</b>	<b>369,105</b>

Village of Hampshire  
 Budget Versus Actual Report - Agency Fund Summary  
 Ten Months Ended February 28, 2026

	SSA#14 B&I (43)					SSA#13 B&I (45)				
	10 MONTHS ENDED		2025-2026			10 MONTHS ENDED		2025-2026		
	YTD BUDGET	YTD ACTUAL	DELTA \$	DELTA %	TOT BUDGET	YTD BUDGET	YTD ACTUAL	DELTA \$	DELTA %	TOT BUDGET
<b>REVENUE</b>										
Property Tax	832,786	832,786	-	0%	832,786	365,200	378,272	13,072	4%	365,200
Investment Income	25,000	51,354	26,354	105%	30,000	29,167	26,261	(2,906)	-10%	35,000
Licenses, Fines, Permits, Fees	-	-	-	0%	-	-	-	-	0%	-
Other Income	-	-	-	0%	-	-	-	-	0%	-
<b>TOTAL REVENUE</b>	<b>857,786</b>	<b>884,140</b>	<b>26,354</b>	<b>3%</b>	<b>862,786</b>	<b>394,367</b>	<b>404,533</b>	<b>10,166</b>	<b>3%</b>	<b>400,200</b>
<b>EXPENSE</b>										
Other Expenses	715,232	158,529	(556,703)	-78%	858,278	332,435	81,711	(250,724)	-75%	398,922
<b>TOTAL EXPENSE</b>	<b>715,232</b>	<b>158,529</b>	<b>(556,703)</b>	<b>-78%</b>	<b>858,278</b>	<b>332,435</b>	<b>81,711</b>	<b>(250,724)</b>	<b>-75%</b>	<b>398,922</b>
<b>YEAR-TO-DATE SURPLUS/(DEFICIT)</b>	<b>142,554</b>	<b>725,611</b>	<b>583,057</b>	<b>409%</b>	<b>4,508</b>	<b>61,932</b>	<b>322,822</b>	<b>260,890</b>	<b>421%</b>	<b>1,278</b>

	Total Agency Funds				
	10 MONTHS ENDED		2025-2026		
	YTD BUDGET	YTD ACTUAL	DELTA \$	DELTA %	TOT BUDGET
<b>REVENUE</b>					
Property Tax	1,197,986	1,211,058	13,072	1%	1,197,986
Investment Income	54,167	77,615	23,448	43%	65,000
Licenses, Fines, Permits, Fees	-	-	-	0%	-
<b>TOTAL REVENUE</b>	<b>1,252,153</b>	<b>1,288,673</b>	<b>36,520</b>	<b>3%</b>	<b>1,262,986</b>
<b>EXPENSE</b>					
Other Expenses	1,047,667	240,240	(807,427)	-77%	1,257,200
<b>TOTAL EXPENSE</b>	<b>1,047,667</b>	<b>240,240</b>	<b>(807,427)</b>	<b>-77%</b>	<b>1,257,200</b>
<b>YEAR-TO-DATE SURPLUS/(DEFICIT)</b>	<b>204,486</b>	<b>1,048,433</b>	<b>843,947</b>	<b>413%</b>	<b>5,786</b>

Village of Hampshire  
 Budget Versus Actual Report - Pension Trust Summary  
 Ten Months Ended February 28, 2026

	<b>Pension Trust Fund Revenues (90)</b>				
	<b>10 MONTHS ENDED</b>				<b>2025-2026</b>
	<b>YTD BUDGET</b>	<b>YTD ACTUAL</b>	<b>DELTA \$</b>	<b>DELTA %</b>	<b>TOT BUDGET</b>
<b>REVENUE</b>					
Investment Income	416,667	25,204	(391,463)	-94%	500,000
Realized and Unrealized Gain/(Loss)	-	1,162,141	1,162,141	100%	-
Less: Investment Fees	-	(5,795)	(5,795)	-100%	-
Member Contributions	114,729	105,062	(9,667)	-8%	137,675
Employer Contributions	479,167	75,000	(404,167)	-84%	575,000
Creditable Service Transfer In	-	-	-	0%	-
Miscellaneous Income	-	-	-	0%	-
<b>TOTAL REVENUE</b>	<b>1,010,563</b>	<b>1,361,612</b>	<b>351,049</b>	<b>35%</b>	<b>1,212,675</b>

	<b>Pension Trust Fund Expenses (90)</b>				
	<b>10 MONTHS ENDED</b>				<b>2025-2026</b>
	<b>YTD BUDGET</b>	<b>YTD ACTUAL</b>	<b>DELTA \$</b>	<b>DELTA %</b>	<b>TOT BUDGET</b>
<b>EXPENSE</b>					
Pension Payments	167,537	166,587	(950)	-1%	201,045
Refund of Contributions	250,493	12,738	(237,755)	-95%	300,591
Transfer to Other Pension Funds	-	-	-	0%	-
Contractual Services	42,917	5,849	(37,068)	-86%	51,500
Other Expenses	1,250	969	(281)	-22%	1,500
<b>TOTAL EXPENSE</b>	<b>462,197</b>	<b>186,143</b>	<b>(276,054)</b>	<b>-60%</b>	<b>554,636</b>
<b>YEAR-TO-DATE SURPLUS/(DEFICIT)</b>	<b>548,366</b>	<b>1,175,469</b>	<b>627,103</b>	<b>114%</b>	<b>658,039</b>



EMBRACE OPPORTUNITY  
HONOR TRADITION

# HAMPSHIRE POLICE DEPARTMENT MONTHLY REPORT

April 2026

Chief Doug Pann

# HAMPSHIRE POLICE DEPARTMENT MARCH STATISTICS



## Hampshire Police Department Scorecard

Mar-26

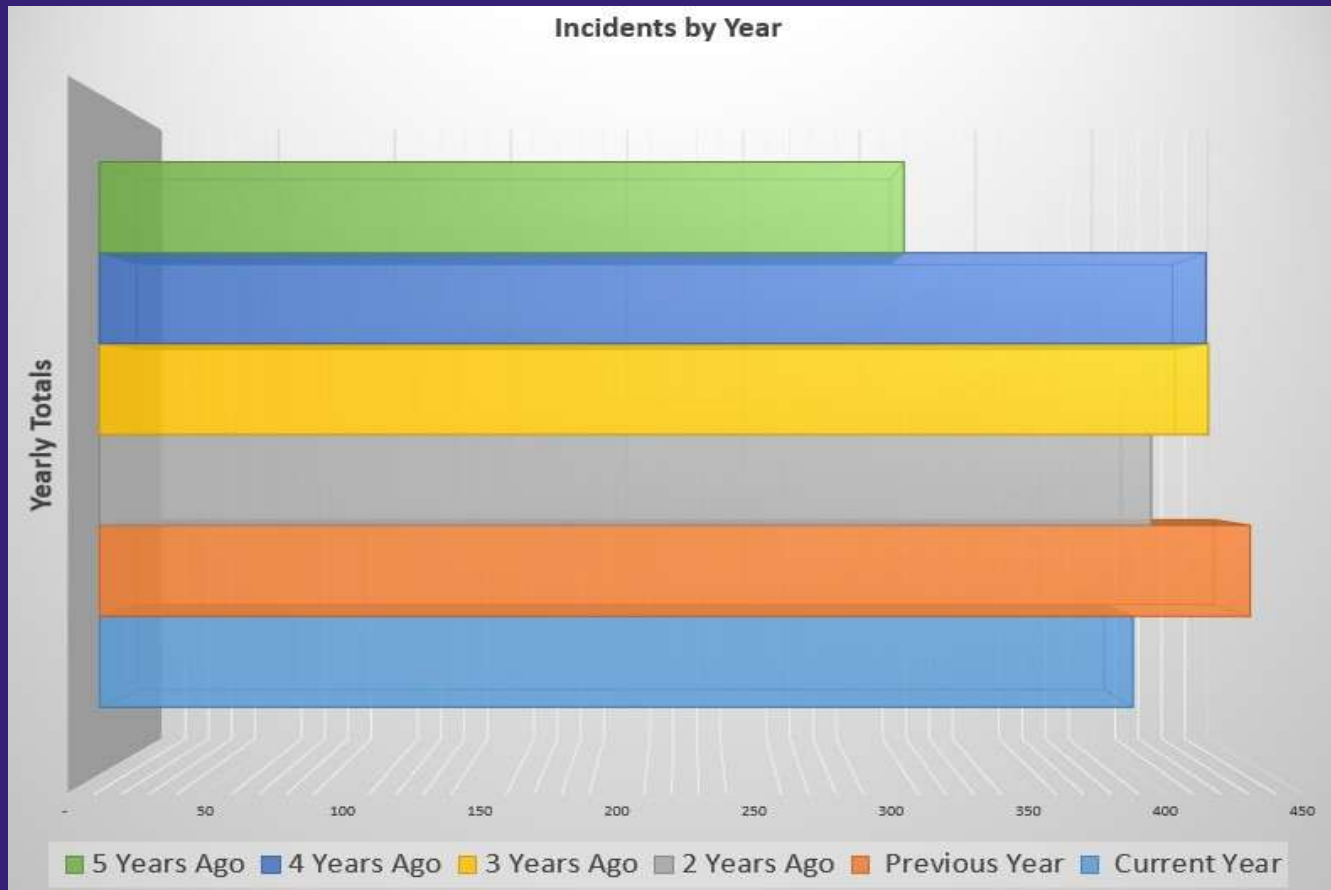
### OFFENSES

	Previous Month	Current Month	% Change	YTD	YTD '25	YTD '24
Group A Offenses	11	7	-36.4%	27	19	18
All Dispatched Calls for Service	251	296	17.9%	791	769	563
Burglary	0	0	0.0%	0	1	0
Burglary to Motor Vehicle and Theft from Motor Vehicle	2	0	-100.0%	3	0	1
Auto Theft	1	2	100.0%	5	3	1
Theft	2	1	-50.0%	4	8	2
Domestic Violence Cases	2	0	-100.0%	5	6	7
Mental Health Calls for Service	2	3	50.0%	9	14	7
Alarm Responses	4	11	175.0%	27	33	21
Assists to Neighboring Communities / KCSO	28	14	-50.0%	57	77	42

### ACTIVITY

	Previous Month	Current Month	% Change	YTD
# Traffic Stops	91	101	11.0%	248
# Traffic Tickets	46	55	19.6%	124
# Traffic Warnings	75	79	5.3%	201
# Parking Tickets	0	1	100.0%	5

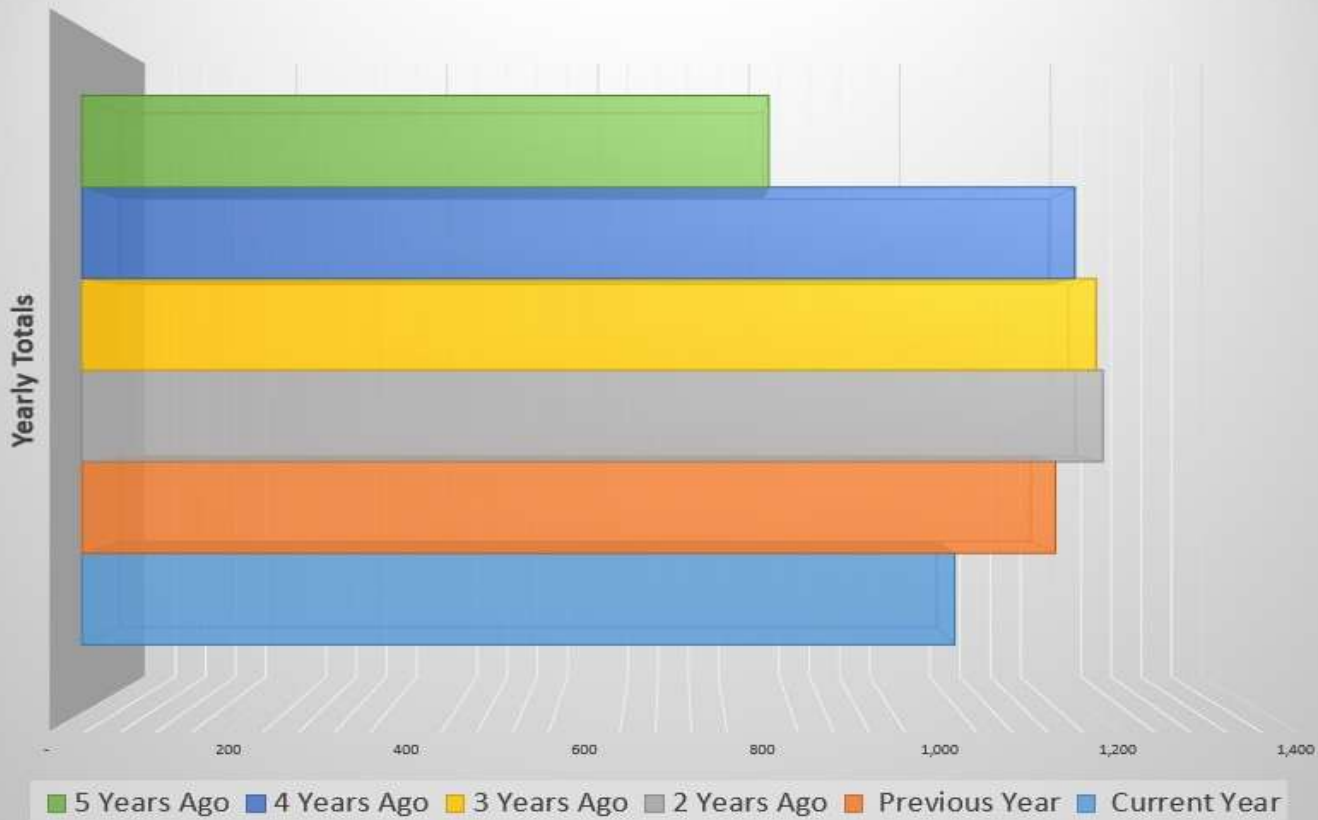
# TOTAL MARCH CALLS FOR SERVICE - 5 YEAR COMPARISON



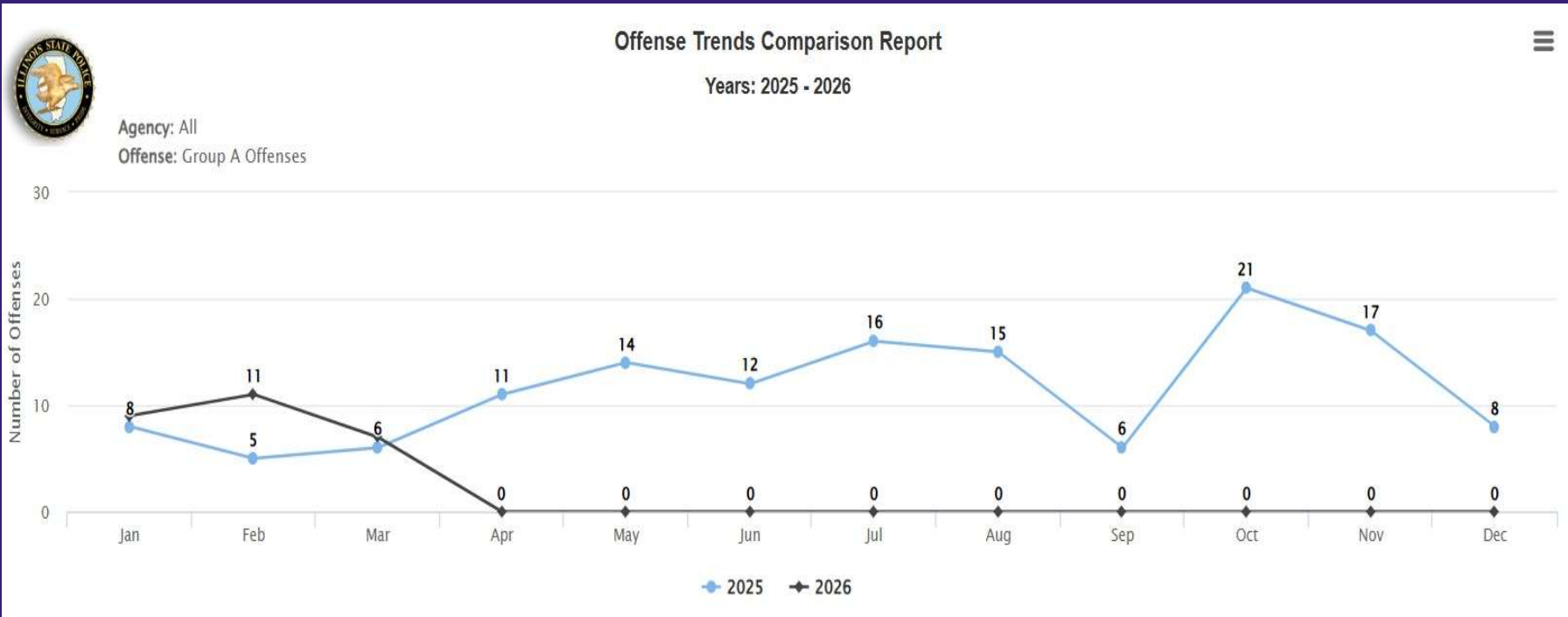
# YTD CALLS FOR SERVICE



Incidents by Year



# NIBRS OFFENSE TRENDS COMPARISON



# GROUP A OFFENSES - CRIMES AGAINST PERSONS



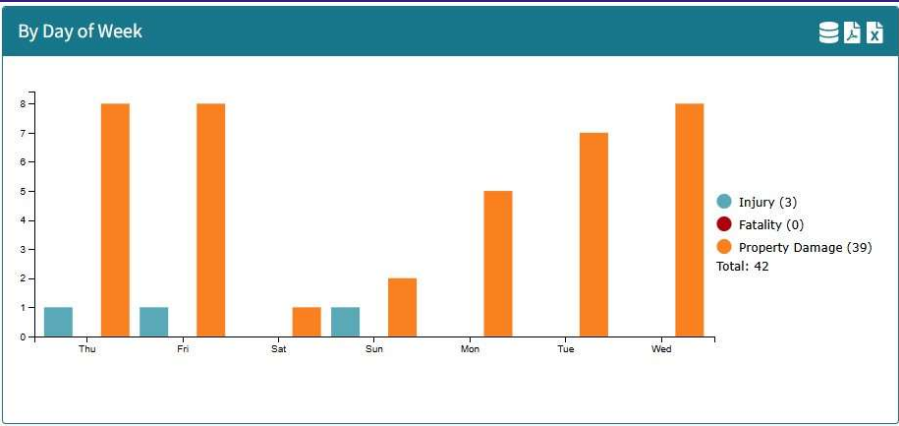
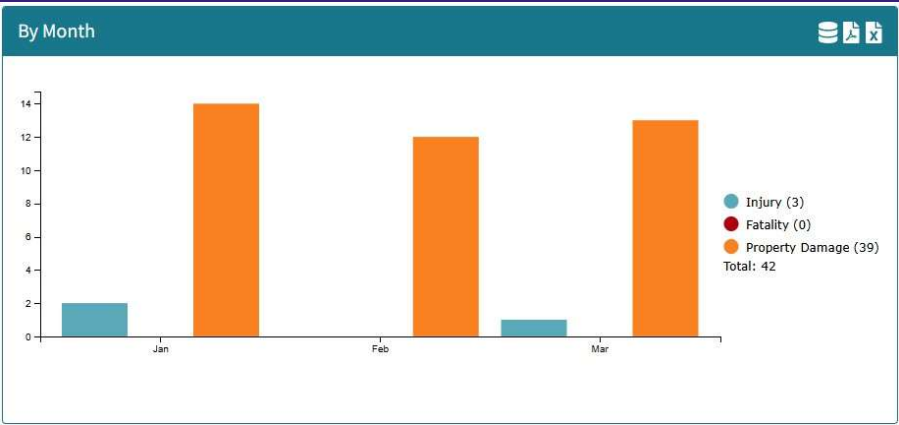
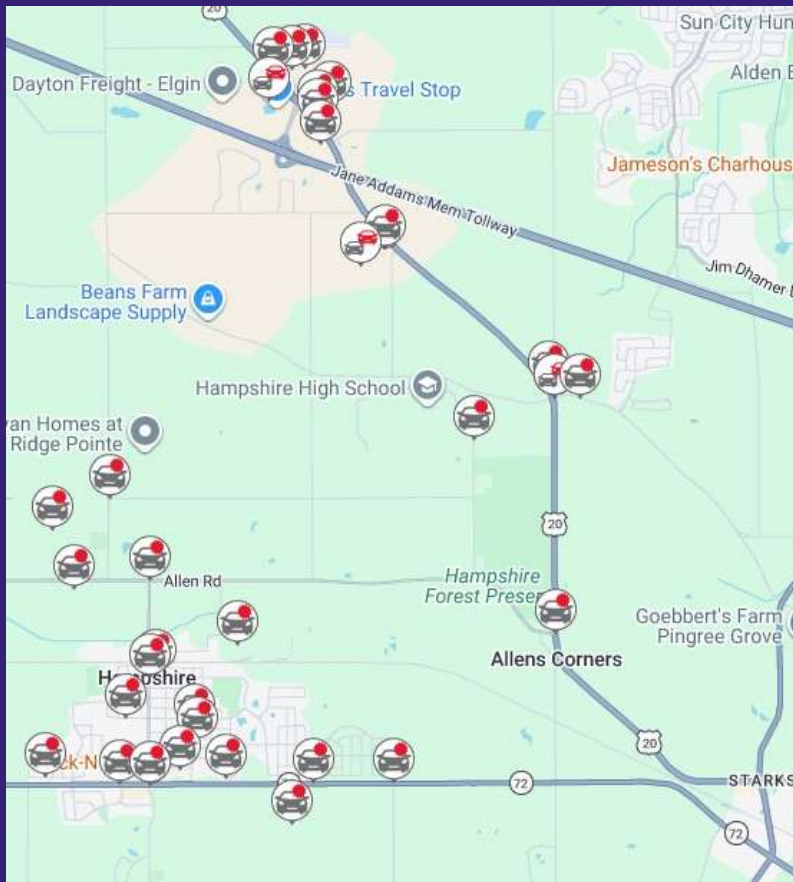
Offense	Reported in 2026	Reported in 2025	Percent Change	Offenses Cleared	Percent Cleared	Percent Of Category	Rate Per 100,000*
Murder	0	0	NA	0	0.00%	0.00%	0.00
Negligent Manslaughter	0	0	NA	0	0.00%	0.00%	0.00
Justifiable Homicide	0	0	NA	0	0.00%	0.00%	0.00
Non-consensual Sex Offenses:							
Rape	0	0	NA	0	0.00%	0.00%	0.00
Sodomy	0	0	NA	0	0.00%	0.00%	0.00
Sexual Assault with Object	0	0	NA	0	0.00%	0.00%	0.00
Fondling	0	0	NA	0	0.00%	0.00%	0.00
Aggravated Assault	0	0	NA	0	0.00%	0.00%	0.00
Simple Assault	3	2	50.00%	2	66.67%	100.00%	32.60
Intimidation	0	0	NA	0	0.00%	0.00%	0.00
Kidnapping/Abduction	0	0	NA	0	0.00%	0.00%	0.00
Consensual Sex Offenses:							
Incest	0	0	NA	0	0.00%	0.00%	0.00
Statutory Rape	0	0	NA	0	0.00%	0.00%	0.00
Human Trafficking, Commercial Sex Acts	0	0	NA	0	0.00%	0.00%	0.00
Human Trafficking, Involuntary Servitude	0	0	NA	0	0.00%	0.00%	0.00
<b>Crimes Against Persons Total</b>	<b>3</b>	<b>2</b>	<b>50%</b>	<b>2</b>	<b>66.67%</b>	<b>11.11%</b>	<b>32.6</b>

# GROUP A OFFENSES - CRIMES AGAINST PERSONS AND PROPERTY



Offense	Reported in 2026	Reported in 2025	Percent Change	Offenses Cleared	Percent Cleared	Percent Of Category	Rate Per 100,000*
Robbery	0	0	NA	0	0.00%	0.00%	0.00
Burglary/Breaking & Entering	0	0	NA	0	0.00%	0.00%	0.00
Larceny/Theft Offenses	7	6	16.67%	0	0.00%	29.17%	76.07
Motor Vehicle Theft	5	0	NA	1	20.00%	20.83%	54.34
Arson	0	0	NA	0	0.00%	0.00%	0.00
Destruction Of Property	6	7	-14.29%	1	16.67%	25.00%	65.20
Counterfeiting/Forgery	0	0	NA	0	0.00%	0.00%	0.00
Fraud Offense	6	4	50.00%	0	0.00%	25.00%	65.20
Embezzlement	0	0	NA	0	0.00%	0.00%	0.00
Extortion/Blackmail	0	0	NA	0	0.00%	0.00%	0.00
Bribery	0	0	NA	0	0.00%	0.00%	0.00
Stolen Property Offenses	0	0	NA	0	0.00%	0.00%	0.00
<b>Crimes Against Property Total</b>	<b>24</b>	<b>17</b>	<b>41.18%</b>	<b>2</b>	<b>8.33%</b>	<b>88.89%</b>	<b>260.81</b>
Drug/Narcotic Violations	0	0	NA	0	0.00%	0.00%	0.00
Drug Equipment Violations	0	0	NA	0	0.00%	0.00%	0.00
Gambling Offenses	0	0	NA	0	0.00%	0.00%	0.00
Pornography/Obscene Material	0	0	NA	0	0.00%	0.00%	0.00
Prostitution	0	0	NA	0	0.00%	0.00%	0.00
Weapons Law Violation	0	0	NA	0	0.00%	0.00%	0.00
Animal Cruelty	0	0	NA	0	0.00%	0.00%	0.00
<b>Crimes Against Society Total</b>	<b>0</b>	<b>0</b>	<b>NA</b>	<b>0</b>	<b>0.00%</b>	<b>0.00%</b>	<b>0</b>

# 3-MONTH TRAFFIC CRASH DATA



# 3-MONTH CRASH DATA



## Alcohol Related Crashes



**0**

Total Crashes

Injury: 0      Fatality: 0      Property Damage: 0  
Injury: 0.00%      Fatality: 0.00%      Property Damage: 0.00%

**0.00%**

% of Alcohol Related Crashes

\*Results exclude any crash reports requiring manual indexing

## Commercial Crashes



**6**

Total Crashes

Injury: 0      Fatality: 0      Property Damage: 6  
Injury: 0.00%      Fatality: 0.00%      Property Damage: 100.00%

**14.29%**

% of Commercial Crashes

\*Results exclude any crash reports requiring manual indexing



# COMMUNITY ENGAGEMENT



## **Village of Hampshire Street Department**

Monthly Report: March 2026

**New Public Works Facility** - Started owners training and punchlist

**Parkway Tree Pruning** - Stop signs and other signage

**Storm Sewer Maintenance** - With the snow melting and April rains coming we checked all retention, detention and restrictors for blockages.

**Fleet and Equipment Maintenance** - Dump and Washed all vehicles and equipment after each snow/ice storm event. Repaired and replaced damaged parts.

**Sweeper** - Swept entire Village

### **Snow Storms**

3-16-2026 ( 6" )

3-18-2026 ( 1" )

**New Employee** - Dawid Jamroz started 3-23-2026 in the Street Department

### **Utility Locates**

463 Normal locates - This was a busy month for utility locating

29 Emergency Locates

### **Asphalt Usage**

Cold Patch - Pothole patch entire Village

### **Work Performed**

Street Light Repair

Sidewalk Grinding - Julie In

Other Miscellaneous Projects